

KNIFE
DUOBLADE WS
13" practical digital roll label finisher



*The most economical digital label finisher
for manless automation with multiple heads*

DUOBLADE WS is a new intelligent model to satisfy cost and performance together, as an all-in-one automatic digital knife blade finisher with cutter, slitters, laminator, CCD and web-guide.

MULTIPLE
CUTTING HEAD
(2 ~ 4 units)

High productivity
average speed @ 4m/min
(7cm x 15cm @ 9m/min)

AUTOMATIC
CUTTING HEAD
CONTROL

Automatic head settings
Automatically adjust cutting head distances
and automatically choose which heads to use

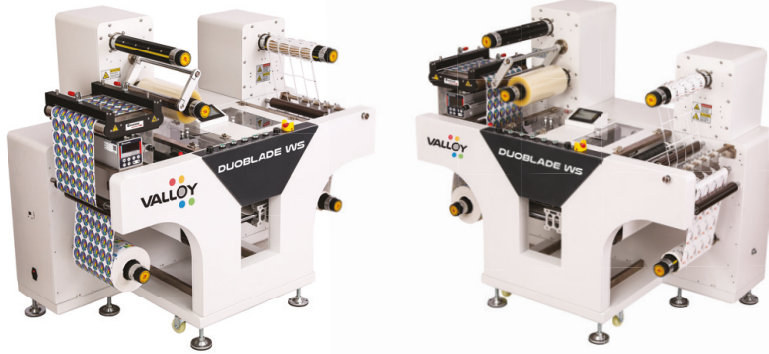
AUTOMATIC
JOB CHANGE

Variable job control
Automatic job change with QR or
job code detection by CCD manlessly

ACCURACY BY
CCD CAMERA

High cutting quality
± 0.05mm cutting accuracy
Registration correction within 0.1sec

COMPONENT



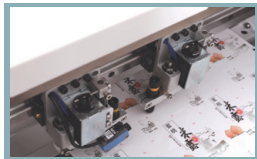
Web-guide (EURDOW)
& Lamination



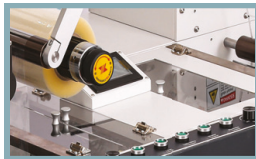
CCD Camera & Sensor
for automatic job change



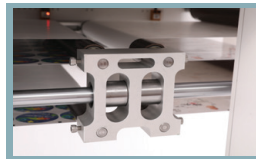
unwinder/rewinder



Multiple cutting head



Safety cover



Servo sliding shuttle

SPECIFICATIONS

- **Max. media diameter**
450mm
 - **Media width**
40~340mm
 - **Max. label width**
320mm
 - **Max. label length**
500mm or longer (multi-cut)
 - **Cut speed**
9m/min (7cm x 15cm)
 - **Mark tracking**
Color sensor + CCD camera
QR code or job code
 - **Cut head qty**
Standard: 2 heads
WS *Max* : 4 heads
 - **Slitting speed**
6m/min in feeding mode
 - **Slitting width**
10~310mm
 - **Slitting precision**
0.1mm
 - **Slitter qty**
4 sets (up to 15 sets)
 - **Machine size (H X W X D)**
1550mm x 925mm x 1300mm
 - **Machine weight**
460 Kgs
 - **Power supply**
110~240VAC, 2,000W
 - **File format**
PLT, DXF, PDF, AI
 - **Option**
Built-in laminating backliner rewinder,
exclusive sheet cutter(CHOPIN 350)
- * No need of air compressor.

CHOPIN 350

Inline sheet cutter for DUOBLADE WS in automatic speed synchronization by signal connection cable



- Max. cutting width: 350mm
- Max. cutting length: 700mm
- Cutting accuracy: 0.1mm
- Max. cutting speed: 150 sheets/min.
- Machine size (W x D x H):
670mm x 460mm x 915mm
- Machine weight
Approx. 100 Kgs